



AssetNow NX Installation Guide
Content Management System

Contents

1.	Introduction	3
2.	System Requirements	4
	2.1. Server Requirements	4
	2.2. Client Requirements	6
3.	Installing AssetNow NX	7
	3.1. Install Location	7
	3.2. Database	7
	3.3. Data Source Configuration	8
	3.4. License Files	9
	3.5. Configuration File	10
	3.6. Renaming the System Directory	10
	3.7. Securing the Assets Directory	11
	3.8. End User Software License Agreement	11
	3.9. Starting AssetNow NX	12
4.	Configuration Parameters	13
5.	Internationalization (i18n)	19
	5.1. Language Bundles	20
	5.2. Editor Localization	20
	5.3. Spellchecker Dictionaries	21
	5.4. ColdFusion MX Locales and Verity Languages	
6.	Scaling Filters	22
7.	Problem Solving	23
	7.1. Resetting AssetNow NX	23
	7.2. Debugging Information	24
	7.3. ColdFusion MX Mappings	24
	7.4. Invalid Licenses	24
8.	Installing the Spellchecker	25
	8.1. Public Web Service	25
	8.2. Installing the Spellchecker Web Service	25

1. Introduction

AssetNow NX is a Content Management System used to publish and access information on the Internet, intranets and extranets.

AssetNow NX is installed on a web server and formats and displays web pages to site visitors. Using web browser-based tools you create and manage site information, and perform administrative functions like user and group management.

AssetNow NX provides support for World Wide Web Consortium (W3C) standards including eXtensible Hyper-Text Markup Language (XHTML), Cascading Style Sheets (CSS) and Web Accessibility Initiatives (WAI, Section 508, Common Look & Feel etc.).

This guide is intended for technical administrators and developers tasked with server configuration and administration.

For an overview of AssetNow NX site and tool features please see *Introduction to AssetNow NX* available from our website.

The *AssetNow NX User Guide* provides detailed information for using the AssetNow NX tools and is available from our website.

IMPORTANT

AssetNow NX is licensed software.

Every installation of AssetNow NX requires a license.

AssetNow NX contains 3rd party components and technology licensed for use in AssetNow NX. Under no circumstances may AssetNow NX components be copied or modified and used outside of AssetNow NX without first obtaining written permission from Orbital Limited. Failure to comply with the license requirements may result in legal action being taken by Orbital Limited, the 3rd party component vendors, or both.



2. System Requirements

2.1 Server Requirements

AssetNow NX can be deployed on dedicated or shared host servers with multiple independent installations on a single server.

AssetNow NX is available for servers running Microsoft Windows or RedHat Linux operating systems with Macromedia ColdFusion MX.

Web Server

Microsoft Windows



Application Server	Macromedia ColdFusion MX 6.1+, MX 7, Developer, Standard/Professional, or Enterprise editions for Windows
Database	Microsoft Access, MSDE or SQL Server 7+, MySQL 4.1. Database connectivity via ColdFusion MX drivers.
Web server	Microsoft IIS 4,5. Apache 1.3.23(Win32), Apache 2.x
Operating systems	Microsoft Windows 2003 Web Edition, Standard Edition, Enterprise Edition, Microsoft Windows 2000 Advanced Server, Datacenter Server, Server (SP3 or higher), Microsoft Windows 2000 Professional (SP3 or higher) , Microsoft Windows XP Professional

RedHat Linux



Application Server	Macromedia ColdFusion MX 6.1+, MX 7, Developer, Standard/Professional or Enterprise editions for Linux
Database	MySQL 4.1+. Database connectivity via ColdFusion MX drivers.
Web server	Apache 1.3.23, Apache 2.x
Operating systems	Linux RedHat 7+, Red Hat Enterprise Linux AS & ES 2.1 or 3.0

AssetNow is installed within the web server document root or a subdirectory of the document root. Multiple independent installations are supported on the same server and within subdirectories of the web server document directory. Each installation of AssetNow NX requires a license.

ColdFusion Tags

AssetNow is designed to run on dedicated or shared (virtual) ColdFusion servers. The following ColdFusion tags must be enabled to use AssetNow NX.

Required ColdFusion Tags

CFCOLLECTION, CFCONTENT, CFDIRECTORY, CFFILE, CFINDEX, CFSEARCH

Optional ColdFusion Tags

CFSCCHEDULE

CFSCCHEDULE is used for automated scheduled indexing of the Verity search collections used by the AssetNow NX site search. If you do not have access to CFSCCHEDULE you can manually index the search collections.

Mail Server

The ColdFusion server must have access to a mail server. AssetNow NX sends automated e-mail notifications. For development servers the mail server can be set to <http://localhost> or <http://127.0.0.1> and mail messages can be recovered from the ColdFusion server mail spool folders. The mail server name/address and optional username and password can be added in the AssetNow NX xml configuration file.

Hosting

AssetNow NX can be deployed on shared hosts that meet the above requirements. Most shared hosting providers offer medium and high level accounts that meet these requirements with the exception of scheduling. Scheduling is not essential and some host providers offer alternative schedulers.

To ensure the security of your AssetNow NX installation, content, and files we recommend that you insist on a hosting provider who deploys ColdFusion MX Enterprise edition on their shared servers and not ColdFusion MX Standard/Professional edition.

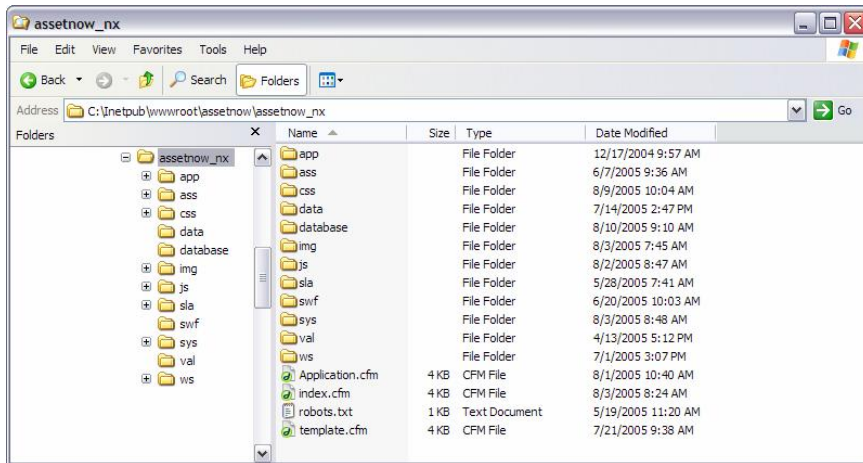
Many providers offer both ColdFusion MX Enterprise edition and ColdFusion MX Standard/Professional edition. ColdFusion MX Standard/Professional is commonly offered on lower cost accounts and typically without support for the tags listed above due to security considerations.

2.2 Client Requirements

Client requirements are for users of the AssetNow NX tools only. AssetNow NX websites and content do not impose any specific client requirements unless you have used browser-specific features in your site templates designs. The default AssetNow NX templates are cross-browser compatible.

AssetNow NX tools work with most popular browsers and desktop operating systems. However to use the AssetNow NX XHTML Editor the following requirements apply:

- Web browser – Microsoft Internet Explorer 5+ (6+ recommended), Mozilla 1.7.5+, Firefox 1.0+, Netscape 8.0+.
- Windows 98, ME, NT, 2000 or XP. Some of the editor's multilingual features may not be available on Windows 98 and ME, since these operating systems do not support Unicode. Support for right-to-left (RTL) languages such as Hebrew and Arabic is only available on Windows 2000 and XP.
- Minimum display resolution of 1024 x 768 pixels (XGA) is recommended.
- Sun Java Virtual Machine (JRE 1.4.x) for upload and scaling applet.



3. Installing AssetNow NX

3.1 Install Location

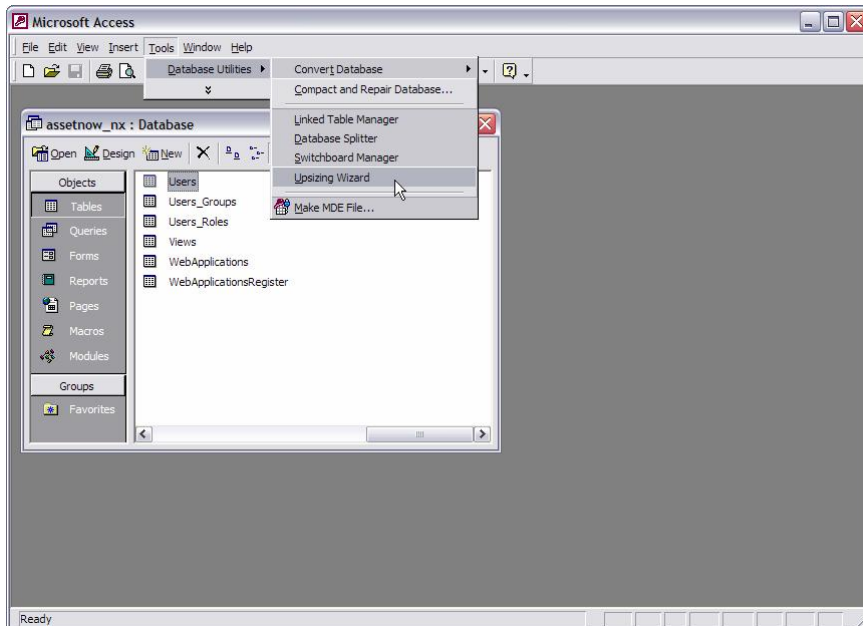
AssetNow NX is provided as a ZIP archive file containing the AssetNow NX application and database.

Unzip the archive file and copy the contents to your web server. Place AssetNow in the web server document root or a subdirectory of the web server document root.

The example opposite shows AssetNow NX copied to the /assetnow/assetnow_nx/ subdirectory of the web server document root on a Windows server.

3.2 Database

AssetNow NX is supplied with a Microsoft Access and a MySQL 4 database located in the database directory.



Microsoft Access

Copy the Microsoft Access database to a secure database directory. Ideally the database should not be placed within your web server document directory. If you do place the database in the web server document directory, as is common with shared hosts, ensure that the directory containing the database does not have general web access permissions. This will prevent unauthorized downloading of your database.

MySQL

Copy the MySQL database located in the /database/mysql/ directory to your MySQL 4 server. Ensure that the database and associated files have the correct permissions and restart the MySQL database service as necessary.

Microsoft SQL Server

If you wish to use Microsoft SQL server you must upsize the supplied Microsoft Access database to your SQL server using the Microsoft Access upsizing wizard show opposite.

After copying the database to the required location, delete the /database directory.

3.3 Data Source Configuration

Setup a data source name (DSN) via the ColdFusion MX Administrator to point to the AssetNow NX database.

The default DSN set in the AssetNow NX configuration file is `assetnow_nx`; you can use this as your DSN or choose your own DSN.

Setup the DSN and note the data source name you use. If you do not use the default AssetNow NX DSN you will have to change the DSN specified in the AssetNow NX configuration file to match the DSN you have used.

Verify the DSN using the ColdFusion MX Administrator verify option. If the DSN does not verify you must resolve this problem before continuing with the AssetNow NX installation.

If you are using Unicode ensure that your database and the driver you select from the ColdFusion MX Administrator supports Unicode.

Microsoft Access

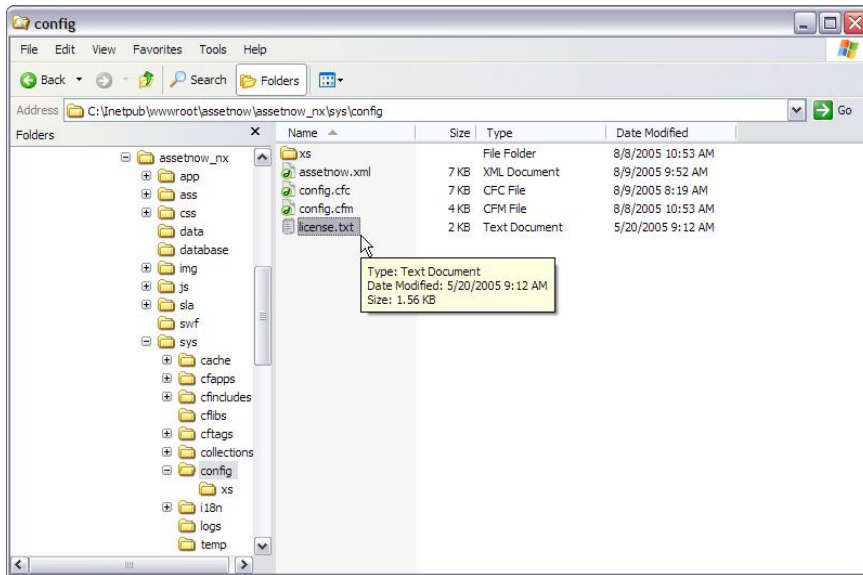
Select the Access with Unicode driver option.

MySQL

If you are using MySQL are not able to configure the AssetNow database and tables for Unicode you can use the following connection string, added via the advanced settings option for the data source:

```
useUnicode=true&characterEncoding=utf-8
```

We recommend Unicode for all installations to ensure forward-compatibility of your content with new technologies and devices. If you intend to server XHTML documents utf-8 is required to comply with the W3C XHTML standards.



3.4 License Files

AssetNow NX requires two license files. One license is for AssetNow NX, the second license is for the AssetNow NX XHTML editor.

The license files authorize AssetNow NX for use with specific urls (domain name, IP address) and the number of named users accessing the AssetNow NX XHTML editor.

The default licenses provided with AssetNow NX are developer licenses and limited to use on <http://127.0.0.1> and <http://localhost>. The default license can only be used when installing on a development server using these addresses.

The default licenses may only be used for development purposes and are not valid for any commercial or live site deployments.

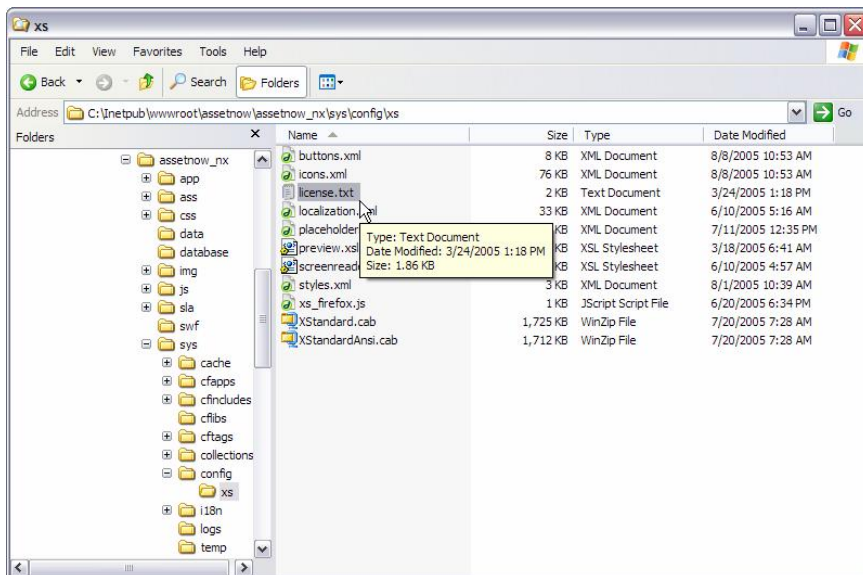
You will also receive a `license.zip` ZIP archive file containing the license files for your domain name/s and IP address/es as specified when you purchased AssetNow NX.

The ZIP archive contains the two license files.

Unzip the ZIP archive and copy the license files as follows:

1. Copy the AssetNow NX `license.txt` file over the default file located in the `/sys/config/` directory as shown opposite.
2. Copy the AssetNow NX XHTML editor license file located in the `/xs` subdirectory of the ZIP archive over the default editor license file located in the `/sys/config/xs/` directory shown opposite (bottom).

The license files will enable use of AssetNow NX on <http://127.0.0.1> and <http://localhost>, in addition to the licensed domains you have specified.



```

<config-param>
  <param-name>CONTENT_REVIEW_DAYS</param-name>
  <param-value>180</param-value>
</config-param>

<config-param>
  <param-name>UPLOAD_APPLET_PASSWORD</param-name>
  <param-value/>
</config-param>

<config-param>
  <param-name>SUPPORTED_VERITY_LANGUAGES</param-name>
  <param-value>english</param-value>
</config-param>

<config-param>
  <param-name>PASSWORD_FORMAT</param-name>
  <param-value>nnaann</param-value>
</config-param>

<config-param>
  <param-name>DSN</param-name>
  <param-value>assetnow_nx</param-value>
</config-param>

<config-param>
  <param-name>UPLOAD_APPLET_USERNAME</param-name>
  <param-value/>
</config-param>

<config-param>
  <param-name>DATE_FORMAT</param-name>
  <param-value>mmm d, yyyy</param-value>
</config-param>

<config-param>
  <param-name>SUPPORTED_LOCALES</param-name>
  <param-value>English (US)</param-value>
</config-param>

<config-param>
  <param-name>SESSION_TIME_MINUTES</param-name>

```

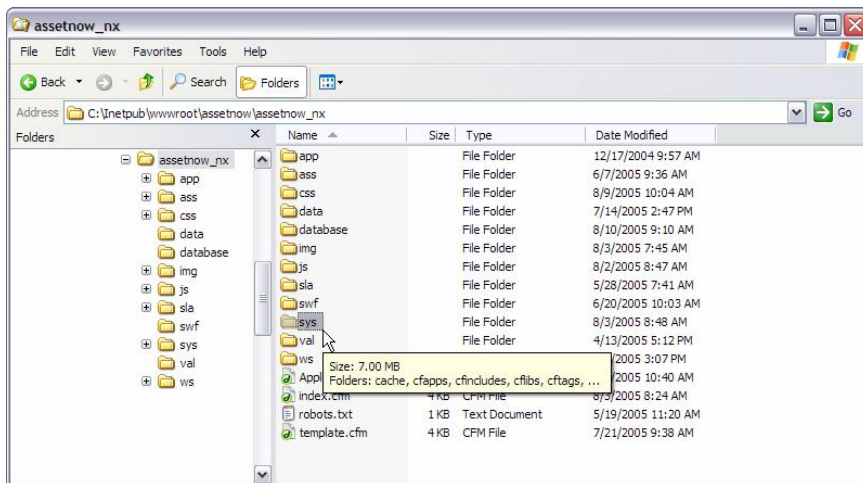
3.5 Configuration File

AssetNow NX configuration parameters are stored in the `assetnow.xml` configuration file located in the `/sys/config/` directory.

If you have used a DSN other than the default DSN you must edit the configuration file and change the DSN parameter to match the DSN you specified.

1. Open the `assetnow.xml` file using a text editor such as Windows Notepad.
2. Use the editor `find` option or scroll down until you locate the DSN parameter (see opposite).
3. Change the default parameter value from `assetnow_nx` to the DSN you specified when configuring the ColdFusion MX data source.
4. Change the `SUPPORTED_LOCALES` and `SUPPORTED_VERITY_LANGUAGES` to include the required locales (see section 5 below). Each locale in the comma delimited list of `SUPPORTED_LOCALES` must have a corresponding entry, or empty entry, in the `SUPPORTED_VERITY_LANGUAGES` list.

You can edit other configuration parameters in the same way, however most parameter values can be changed easily using the AssetNow NX System > Setup tool after you have started AssetNow NX.



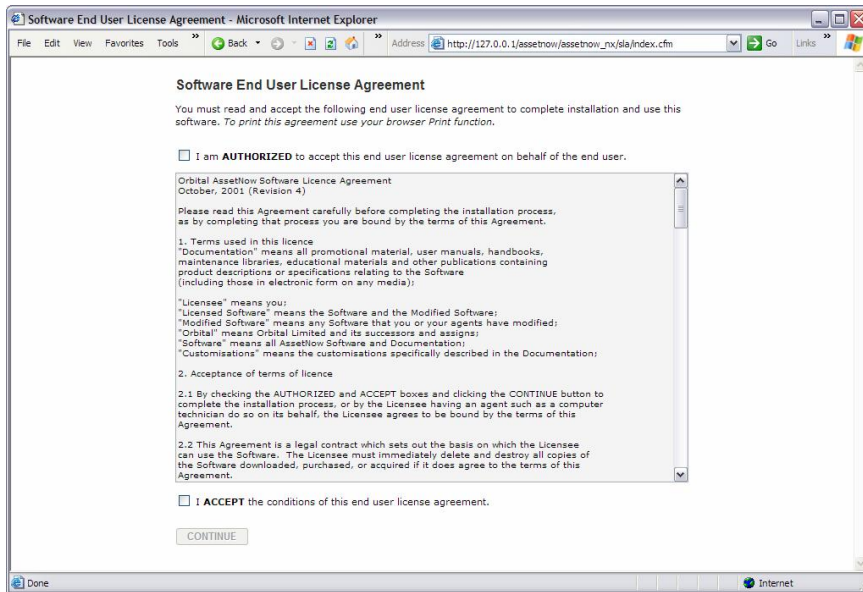
3.6 Renaming the System Directory

Optionally rename the AssetNow NX system directory from the default `sys` to a custom name.

The name you use must include an underscore character and be of the format `sys_xxx` where you replace `xxx` with a valid operating system directory name. We recommend using a name related to the site install directory or domain name.

For example if the site is installed in a directory named "mysite" then rename the `sys` directory to `sys_mysite`.

Renaming the AssetNow NX system directory is optional but doing so provides added security for non-ColdFusion files such as text files and xml files that are not secured via AssetNow NX and ColdFusion MX application framework.



3.7 Securing the Assets Directory

Optionally remove general web access permissions, set via your web server permissions, from the AssetNow NX `ass` directory.

AssetNow NX stores assets in a folder structure based on the content and revision IDs of a content item. Since the revision ID is not available to site visitors the assets cannot easily be accessed directly.

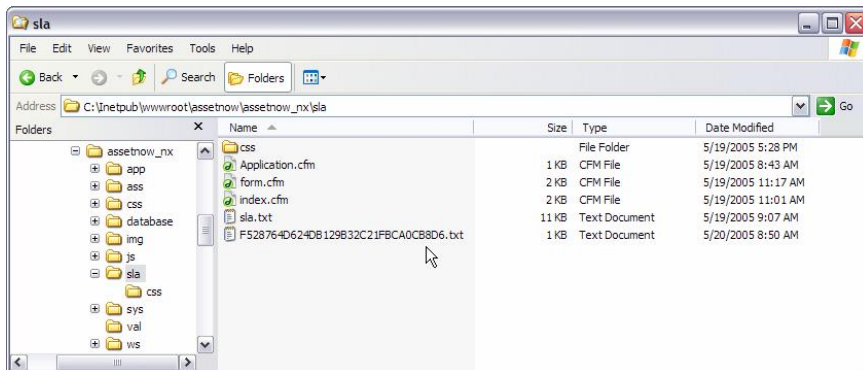
Removing general web access permissions from the assets directory ensures cannot be accessed directory even by someone with knowledge of the assets directory structure and revision ID.

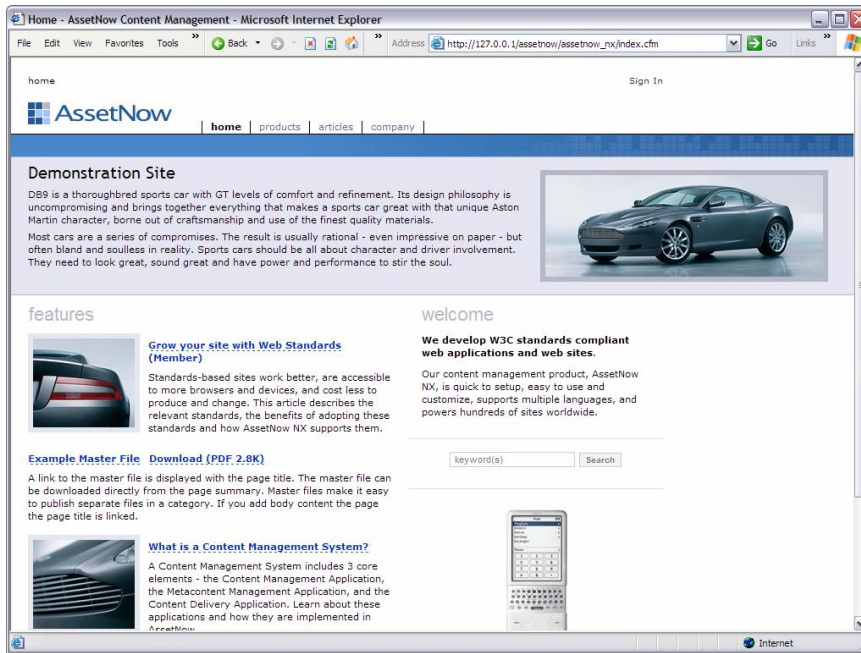
3.8 End User Software License Agreement

With your web browser navigate to the url where you have installed AssetNow NX. The first time you access the site the End User License Agreement is displayed. The license agreement must be accepted to complete installation.

To accept the license agreement check the AUTHORIZED and ACCEPT checkbox options and then click the CONTINUE button. After a short delay whilst AssetNow NX is initialized the default AssetNow site will be displayed.

If you wish to force acceptance of the license agreement manually delete the acceptance file located in the `/sla/` directory and then reset the site. The acceptance file can be identified by a 32 character name. A new acceptance file is created for every domain name/IP address used to access the site.





3.9 Starting AssetNow NX

With your web browser navigate to the url where you have installed AssetNow NX. The default AssetNow site will be displayed.

If the default site is not displayed consult the problem solving section.

You can now login as the Site Administrator. Click the Sign In link located at the top right of the home page and sign-in using the default Site Administrator login:

```
username = siteadmin
password = siteadmin
```

After signing in the tools link and a sign out link will replace the sign-in link.

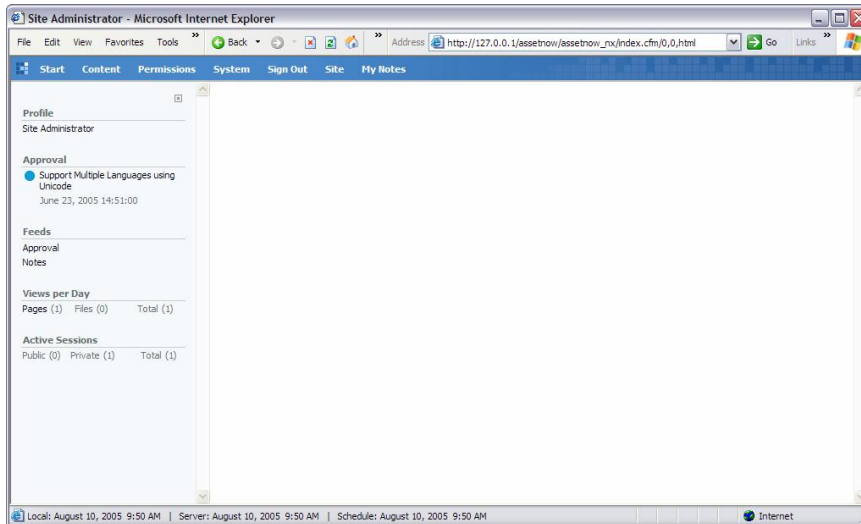
If the tools link is not available and "Site Administrator" is displayed next to the sign out link you have an invalid license.

Click the tools link to access the AssetNow NX tools.

You should not perform the following tasks:

1. Change the default Site Administrator and other logins using the *Permissions > Users* tool.
2. Change the site e-mail addresses and other setup parameters as described below, using the *System > Setup* tool.
3. Initialize the site search using the *System > Search* tool.

Refer to the *AssetNow NX User Guide*, available from our web site, for details of the *Permissions* and *Search* tools.



Setup	
CHART_AVERAGE_DAYS	7
WEB_SERVICES_URL	http://localhost
EMAIL_APPROVAL	demo@127.0.0.1
MAIL_SERVER_USERNAME	
SITE_COPYRIGHT	Orbital Limited
DISALLOW_CFML_TAGS	directory,dfine,dcontent,dsearch,dindex
DEFAULT_COUNTRY_ID	New Zealand (153)
ALLOW_DISPLAY_TYPES	rss
WEB_SERVICES_SPELLCHECKER	http://localhost/nxw/spellchecker.asp
CUSTOM_VARS	
INDEXING_TIMEOUT_SECONDS	1800
EMAIL_USER	demo@127.0.0.1
ALLOW_IMAGE_TYPES	jpg,gif,png,swf
XSTANDARD_VERSION	1.6.0.0
XSTANDARD_OPTIONS	130
TIME_FORMAT	HH:mm:ss
EXECUTE_CFML	<input type="radio"/> No <input checked="" type="radio"/> Yes
MAX_ASSET_FILE_SIZE	20480000
CACHE_CONTENT	<input type="radio"/> No <input checked="" type="radio"/> Yes
MAX_IMAGE_FILE_SIZE	5120000
CONTENT_REVIEW_DAYS	180
UPLOAD_APPLET_PASSWORD	
SUPPORTED_VERITY_LANGUAGES	english,japanese
PASSWORD_FORMAT	aaaaaa
EMAIL_ERROR	demo@127.0.0.1
EMAIL_ADMIN	demo@127.0.0.1
ALLOW_FILE_TYPES	pdf,jpg,gif,png,bxt,zip,doc,xls,ppt,rtf
MAIL_SERVER	127.0.0.1
EMAIL_SUPPORT	demo@127.0.0.1
EMAIL_INFO	demo@127.0.0.1
DATE_FORMAT	mmmm d, yyyy
EMAIL_NO_REPLY	noreply@127.0.0.1
SITE_URL	127.0.0.1
ENCRYPT_KEY	12arfg37f6e
REMOVE_WHITESPACE	<input type="radio"/> No <input checked="" type="radio"/> Yes
XHTML_TEMPLATES	category/home,category/default,content/de
SUPPORTED_LOCALES	English (US),Japanese
SERVER_TIME_OFFSET_MINUTES	0
MAIL_SERVER_PASSWORD	
UPLOAD_APPLET_USERNAME	
EMAIL_CONTACT	demo@127.0.0.1
SITE_NAME	AssetNow Content Management

4. Configuration Parameters

Use the `System > Setup` tool to change setup configuration parameters, stored in the `assetnow.xml` configuration file. At a minimum you should change the site e-mail addresses and site name parameter. After making changes click the `Save` button for changes to be applied and saved in the configuration file.

CHART_AVERAGE_DAYS

The number of days used to average the content usage charts available from the tools Start page.

WEB_SERVICES_URL

The licensed url for the web services used by the AssetNow NX XHTML editor. Normally the url will be the same as the primary domain licensed for AssetNow NX. You can confirm the url by opening the AssetNow NX XHTML editor `license.txt` file located in the `/sys/config/xs/` directory in a text editor.

EMAIL_APPROVAL

Reply ("from") E-mail address used in approval request e-mails.

MAIL_SERVER_USERNAME

Username if required by mail server when sending mail from AssetNow NX via ColdFusion MX.

SITE_COPYRIGHT

Text used by the site copyright widget.

DISALLOW_CFML_TAGS

Comma delimited list of ColdFusion tags that can not be used in in-page scripting.

DEFAULT_COUNTRY_ID

Default country set in forms. Available for developers using the AssetNow NX countries table.

ALLOW_DISPLAY_TYPES

Comma delimited list of custom output formats. Remove any formats that you do not wish to provide. Developers can add custom types with custom output handlers.

Each display type must be associated with template handler. Add xhtml to serve xhtml content to browsers that support the application/xhtml+xml media type. Add rss to support RSS feeds.

WEB_SERVICES_SPELLCHECKER

Url of the AssetNow NX XHTML spellchecker web service. Leave blank to disable spell checking.

CUSTOM_VARS

Comma delimited list of custom variables and values that will be set in the application.config scope. Variable names are prefixed with CVAR_. Example adding variables myvar1=22,myvar2=54 will result in variables application.config.CVAR_MYVAR1 and application.config.CVAR_MYVAR2 being created with values of 22 and 54 respectively.

INDEXING_TIMEOUT_SECONDS

Request timeout for Verity search indexing. If indexing persistently times out then try extending this interval.

EMAIL_USER

Reply ("from") E-mail address available for developers for web site user account related messages.

ALLOW_IMAGE_TYPES

Comma delimited list of image file types that publishers may upload.

XSTANDARD_VERSION

Version of the AssetNow NX XHTML editor. If you receive an update for the editor you will be advised if this parameter must be changed accordingly.

XSTANDARD_OPTIONS

Numeric value used to as a bit mask to set specific AssetNow NX XHTML editor options. The value is the sum of the value associated with each option. Default value is 130 = 2 + 128.

Value	Description
1	Display hard returns.
2	Automatically fix errors when invalid code is loaded into the editor.
4	Disable context menu (pop-up menu when the right-click mouse button is clicked).
8	Wrap text in View Source.
16	Hide line numbers in View Source.
32	Disable image resizing using image handles (dragging).
64	Treat uploading images as decorative.
128	Show required fields in dialog boxes.
256	Convert extra spaces to hard spaces.
512	Hide advanced editing features (Advanced and Custom tabs as well as some fields in the Properties dialog boxes).

TIME_FORMAT

Format of time stamps applied using ColdFusion mask format. Default is HH:mm:ss.

EXECUTE_CFML

Global control of in-page ColdFusion script processing.

MAX_ASSET_FILE_SIZE

Maximum asset file size publishers are allowed to upload.

CACHE_CONTENT

Enable caching of public categories and pages. Categories and pages can be excluded from caching. Cached content is significantly faster and places much less loading on the server.

MAX_IMAGE_FILE_SIZE

Maximum image file size publishers are allowed to upload.

CONTENT_REVIEW_DAYS

Number of days ahead of content creation date when item must be reviewed.

ColdFusion MX Locales	Verity Languages
Chinese (China)	<i>European Verity Locales language pack:</i>
Chinese (Hong Kong)	bokmal
Chinese (Taiwan)	danish
Dutch (Belgian)	dutch
Dutch (Standard)	english
English (Australian)	finnish
English (Canadian)	french
English (New Zealand)	german
English (UK)	italian
English (US)	nyorsk
French (Canadian)	norwegian
French (Standard)	norweg
French (Swiss)	portug
French (Belgian)	portugese
German (Austrian)	spanish
German (Standard)	swedish
German (Swiss)	
Italian (Swiss)	<i>Asian Verity Locales language pack:</i>
Italian (Standard)	arabic
Japanese	czech
Korean	greek
Norwegian (Bokmal)	hebrew
Norwegian (Nynorsk)	hungarian
Portuguese (Brazilian)	japanese
Portuguese (Standard)	korean
Spanish (Standard)	polish
Spanish (Mexican)	russian
Spanish (Modern)	simplified_chinese
Swedish	traditional_chinese
	turkish

UPLOAD_APPLET_PASSWORD

Optional www-authentication password sent by upload applet to server. Usually this is not required and left empty.

SUPPORTED_VERITY_LANGUAGES

Comma delimited list of Verity languages available on the ColdFusion MX server (see table opposite). Each language must correspond with a language in the SUPPORTED_LOCALES parameter.

PASSWORD_FORMAT

Mask for AssetNow generated passwords used when creating user accounts where n = numeric, a = alpha. Default mask is nnaaann.

EMAIL_ERROR

Reply ("from") E-mail address used in error notification e-mails. AssetNow NX limits the number of error e-mails to a maximum of 10 (all errors are logged), the site must be reset to re-enable error e-mails. If the EMAIL_ERROR address is the same as the EMAIL_NO_REPLY address no error notifications are sent.

EMAIL_ADMIN

Site Administrator e-mail address.

ALLOW_FILE_TYPES

Comma delimited list of asset file types that publishers may upload.

MAIL_SERVER

Url/IP address of the mail server used by ColdFusion MX.

EMAIL_SUPPORT

E-mail address available for developers for web site support related messages.

EMAIL_INFO

E-mail address available for developers for web site information related messages.

DATE_FORMAT

Format of date stamps applied using ColdFusion mask format. Default is `mmmm d, yyyy`.

EMAIL_NO_REPLY

Reply ("from") E-mail address available for developers for web site messages that should not be replied to.

SITE_URL

Primary site Url/IP address including protocol. Examples:

<http://www.mysite.com> OR <https://mysite.com> OR
<http://206.67.60.194>

ENCRYPT_KEY

Random alphanumeric string used to encrypt data such as the cookie used to store login details. Simply change the string periodically to invalidate any cookies.

REMOVE_WHITESPACE

Removes white space left by ColdFusion MX after processing templates. Generally you should enable the white space management option available in the ColdFusion MX administrator. Some service providers do not enable this option in which case you can use this option to remove white space. Removing white space will result in smaller page file size and hence faster loading and reduced bandwidth. Leading white space can also cause problems with XML files.

XHTML_TEMPLATES

Comma delimited list of templates that should be processed as media type `application/xhtml+xml` for browsers that accept this media type. Example: `category/home,category/default,content/default` will process category home and default templates and the content default template.

SUPPORTED_LOCALES

Comma delimited list of locales supported in the site. Locales must correspond with valid ISO 639 locales (see table above and Section 5). The first locale in the list is the default locale.

SERVER_TIME_OFFSET_MINUTES

Positive or negative offset of the server time with respect to your preferred "local" time. For example if your main offices are located in New Zealand and your site is hosted on a server in the United States you can offset the server time so that the site operates on New Zealand time. This primarily affects scheduled content where you want content changes to occur with respect to

local time. The local, server, and schedule (offset server time) time is displayed in the browser status bar when in tools mode.

MAIL_SERVER_PASSWORD

Password if required by mail server when sending mail from AssetNow NX via ColdFusion MX.

UPLOAD_APPLET_USERNAME

Optional www-authentication username sent by upload applet to server. Usually this is not required and left empty.

EMAIL_CONTACT

Reply ("from") E-mail address available for developers as a general web site contact e-mail address.

SITE_NAME

Site name used in page metadata.

The following configuration parameters can only be changed by editing the `assetnow.xml` configuration file, they cannot be changed from the AssetNow System > Setup tool.

SITE_GENERATOR

The installed version of AssetNow NX.

SESSION_REFRESH_SECONDS

Keep alive refresh interval used for tools session heartbeat.

ENCODING

Character set encoding used by AssetNow NX. Default is Unicode UTF-8.

DSN

Data Source Name used to connect to the AssetNow NX database.

SESSION_TIME_MINUTES

Session time as configured via the ColdFusion MX administrator. The default is normally 20 minutes. If you change this ColdFusion setting then update this parameter to the new value.

5. Internationalization (i18n)

AssetNow NX uses language bundle files for user interface text strings and messages. The i18n files are located in the `/sys/i18n/` directory.

AssetNow NX is supplied with bundles files for US English. If your server is not configured for US English you must copy/rename the supplied bundle files for the required locale, and translate the text strings as necessary.

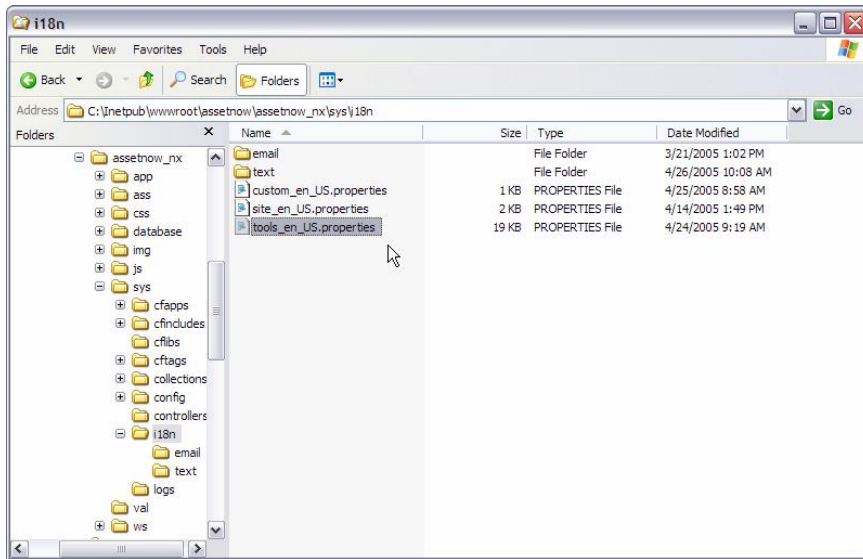
The following table lists some commonly used languages and their respective locale and locale code. AssetNow NX can support any language that can be represented using Unicode.

Language	Locale	Locale Code
Chinese Traditional	Chinese (Taiwan)	zh_TW
Chinese Simplified	Chinese (China)	zh_CN
Chinese Traditional	Chinese (Hong Kong)	zh_HK
Dutch	Dutch (Standard)	nl_NL
English (American)	English (US)	en_US
French	French (Standard)	fr_FR
German	German (Standard)	de_DE
Japanese	Japanese	ja_JP

Complete listing of the ISO 639 language codes can be found at W3C web site.

Unicode (UTF-8) encoding is recommended for all deployments in preference to language specific character set encodings such as ISO-8859 (typically used by European languages), BIG5 (Chinese), SHIFT-JIS (Japanese) etc.

In addition to language support, Unicode will also ensure your content can be used with future applications and technologies.



5.1 Language Bundles

AssetNow NX uses language bundle to allow localization of interface text. Bundle files are named according to the required language using the ISO language codes. AssetNow NX provides separate bundle files for the site interface text and the AssetNow NX tools interface text.

Language	Bundle File	Description
English (US)	site_en_US.properties	Site interface text strings
English (US)	tools_en_US.properties	Tools interface text strings

To translate the site interface into Japanese make a copy of the supplied `site_en_US.properties` bundle file and rename it `site_ja_JP.properties`, then using a Unicode compatible editor, such as Windows Notepad, translate the English interface text strings to the required Japanese text.

Bundle files contain text identifier and value pairs formatted as follows:

```
AN_TEXT_STRING = Localized text to display
```

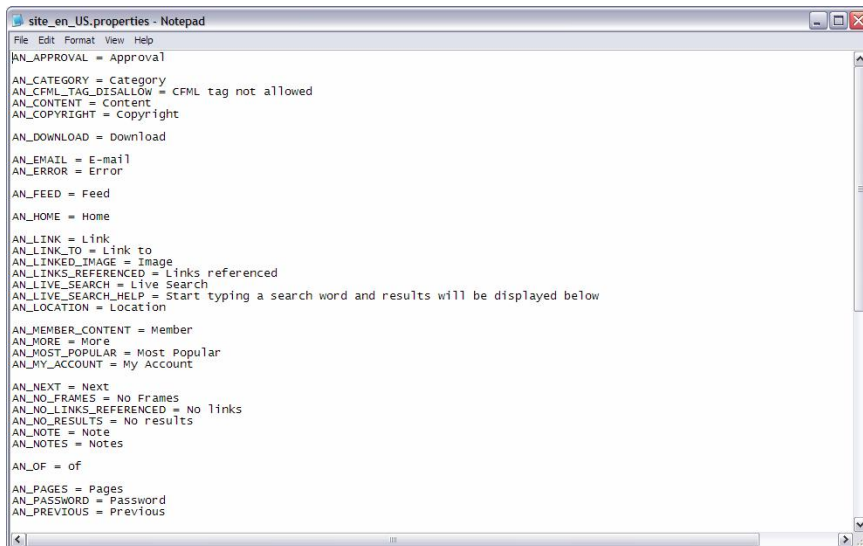
Each identifier and value must appear on a new line.

If you require more specific text due to language semantic or contextual requirements you can modify the AssetNow NX templates by adding additional user interface text strings. Corresponding text strings are then added in the bundle file.

If a bundle file does not exist for a language you specify in the `SUPPORTED_LOCALES` parameter it will be created and the error logged. If a text string does not exist in the bundle site it will be appended to the end of the file and an error logged. You can check the `i18n` error log to correct these errors.

5.2 Editor Localization

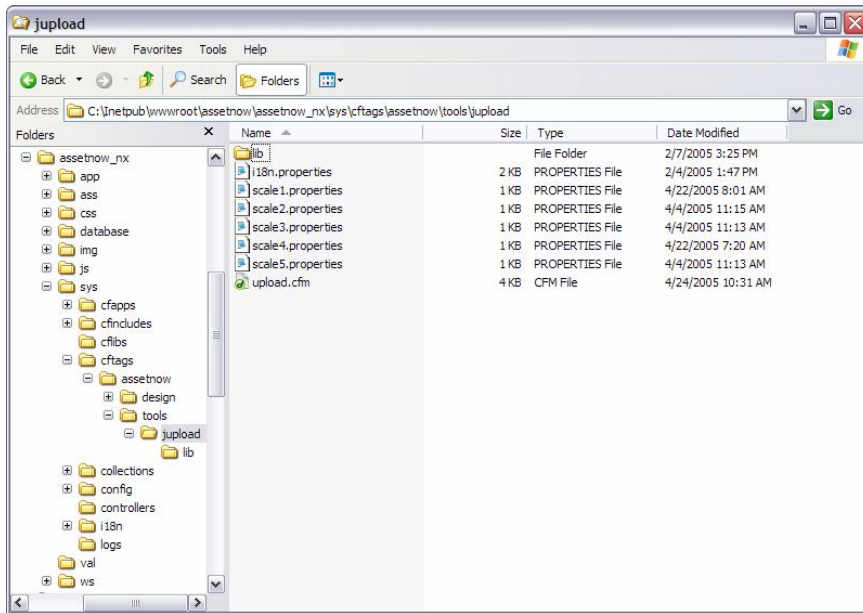
AssetNow NX XHTML editor provides two xml files containing user interface strings for localization. These are located in the `/sys/config/xs/` directory and named `localization.xml` and `buttons.xml`.



5.3 Spellchecker Dictionaries

The editor spell checking is set to the language of the category containing the document being edited. For example if the document you are editing is contained in a category with language set to French then the editor spell checker will be set to French.

The AssetNow NX XHTML editor uses a web services based spell checker. The spell checker provides Danish, Dutch, English, Finnish, French, German, Italian, Norwegian, Portuguese, Spanish and Swedish dictionaries.

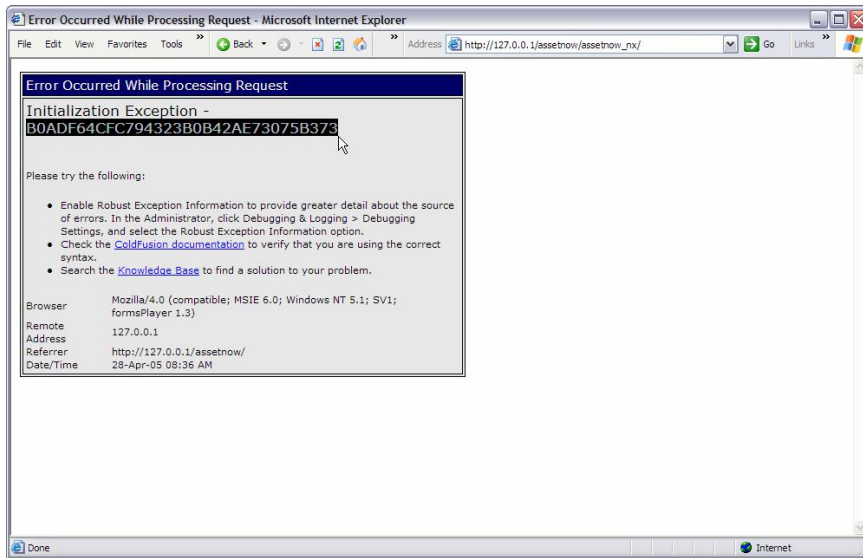


6. Scaling Filters

AssetNow NX includes a java applet for uploading large asset files and images. The image applet has 5 scaling presets that are applied to jpg and png images prior to uploading. The scaling preset values can set the maximum width and height of the image or can scale the image by a set factor to either enlarge or reduce the image size.

Each preset has a corresponding properties file. These files are located in the `/sys/cftags/assetnow/tools/jupload/` directory as shown opposite.

You can edit each scale properties file and change the settings as required. Comment out the width and height settings if you wish to use a scale setting. Scale settings greater than 1 enlarge the image, values between 0 and 1, for example 0.5, reduce the image size.



7. Problem Solving

7.1 Resetting AssetNow NX

Resetting clears all persistent AssetNow NX settings stored in the ColdFusion server memory and reinitializes AssetNow NX. You can reset AssetNow NX from the tools System > Reset option.

If you are unable to sign-in you can reset AssetNow by adding the `resetsite` parameter to the site url.

For example if the site url is:

http://127.0.0.1/assetnow/assetnow_nx/

then add the default template and `resetsite` parameter

http://127.0.0.1/assetnow/assetnow_nx/index.cfm?resetsite=xxx

where `xxx` is the reset parameter.

For initialization errors the reset parameter is displayed in the error message as shown in the simulated error message opposite. Reload the url in your browser to reset the site.

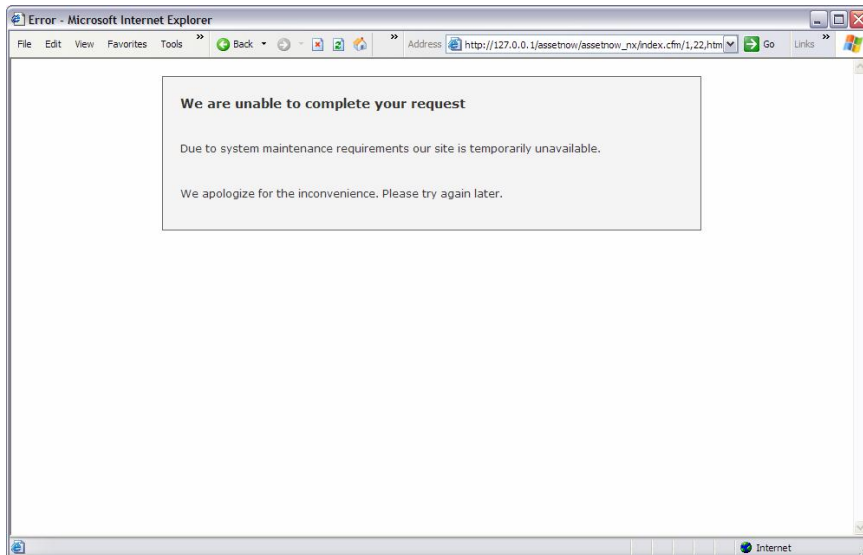
Highlight and copy and paste the parameter into your browser address bar replacing `xxx` in the url as described above.

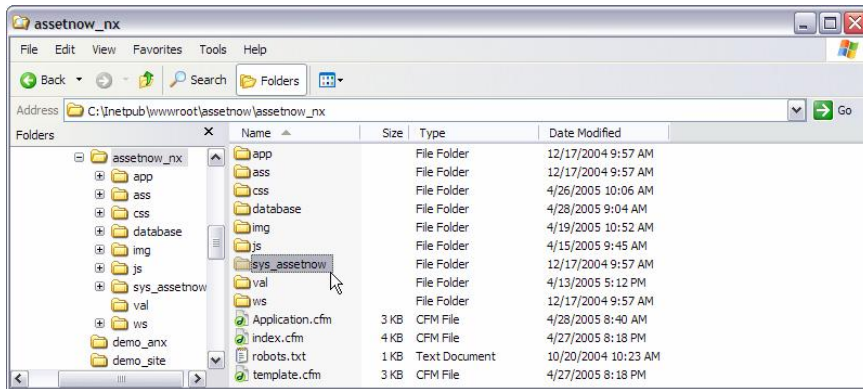
For any other errors AssetNow NX displays a customizable error message shown opposite (bottom). The reset parameter is available in the page source using your web browser "view source" option.

The reset code is available in an XHTML comment located just after the `<body>` tag in the source and is looks similar to this:

```
<!-- B0ADF64CFC794323B0B42AE73075B373 -->
```

Highlight and copy and paste the parameter, excluding the comment tags, into your browser address bar replacing `xxx` in the url as described above. . Reload the url in your browser to reset the site.





7.2 Debugging Information

To display the ColdFusion debugging information in place of the AssetNow NX error message either login as the site Administrator or add the debug url parameter using the `resetsite` parameter value:

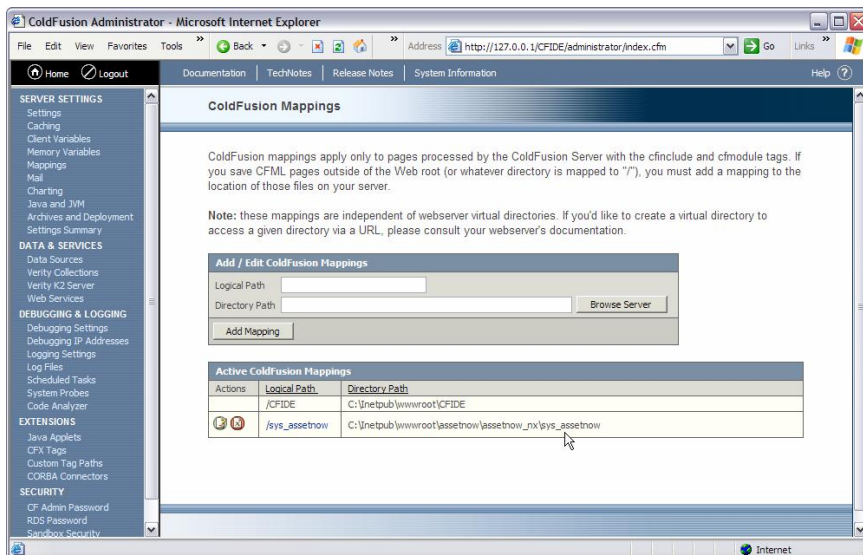
http://127.0.0.1/assetnow/assetnow_nx/index.cfm?debug=xxx

7.3 ColdFusion MX Mappings

Typically AssetNow NX does not require any specific ColdFusion MX mappings to be added via the ColdFusion MX Administrator. ColdFusion mappings apply only to pages processed by the ColdFusion Server with the `cfinclude` and `cfmodule` tags.

AssetNow NX only uses these tags with respect to the AssetNow NX system directory. If you encounter problems setting up AssetNow NX due to `cfinclude` not being able to locate an AssetNow NX template, add a ColdFusion mapping to point to the AssetNow NX system directory.

1. If you have more than one installation of AssetNow NX on your server, or if you are deploying on a shared host, rename the AssetNow NX system directory as described in section 3.6.
2. Via the ColdFusion MX Administrator add a mapping for the AssetNow NX system directory. For example for the site shown opposite we have renamed the `sys` directory to `sys_assetnow`. The physical path to this directory is `C:\inetpub\wwwroot\assetnow\assetnow_nx`. The corresponding mapping is shown in the ColdFusion MX administrator opposite.



7.4 Invalid Licenses

If you attempt to access the AssetNow NX site using a url that is not licensed an error message will be displayed stating that the domain name/IP address used in not licensed.

If the editor license is invalid or the `WEB_SERVICES_URL` configuration parameter is incorrect, or the web service is unavailable the AssetNow NX XHTML editor will revert to a basic version that does not support advanced editor features including image and file uploading, and directory related features.

8. Installing the Spellchecker

The AssetNow NX XHTML editor spellchecker uses a web service. You can install the spellchecker web service on your own server, or use a public web service.

8.1 Public Web Service

The public web service is located at: <http://soap.xstandard.com/spell.asp>. To use the public web service, enter this url in the WEB_SERVICES_SPELLCHECKER configuration parameter.

8.2 Installing the Spellchecker Web Service

Instructions to download the required programs will be sent to you with your AssetNow NX download instructions.

Server Requirements

- ASP on Microsoft Windows servers
- PHP 4.3.0+ on Linux / FreeBSD / Microsoft Windows

ASP Installation

1. Run the setup program called `x-webservices-asp.exe`
2. Set Read & Execute file permissions on the directory where the program is installed (default location is `C:\XStandard Web Services`) to Everyone.
3. Copy the `spell.asp` and `spell.config` files to your web server document root or another path that has an IIS virtual directory mapping. Set Read & Write file permissions on this folder to Everyone.

PHP Installation

1. Unzip the file called `x-web-services-php.zip`
2. Copy `spell.php` and `spell.config` to a folder on your web server. Make sure this folder has the broadest possible permissions. On Linux/Unix systems set permissions to `777`.

Testing

Test the spellchecker web service by navigating to the url where the web service is located. If the web service is installed correctly you will see `Status: Ready`. If you do not see the status message then the web service is not correctly installed. The most common cause of this is incorrect file permissions.